

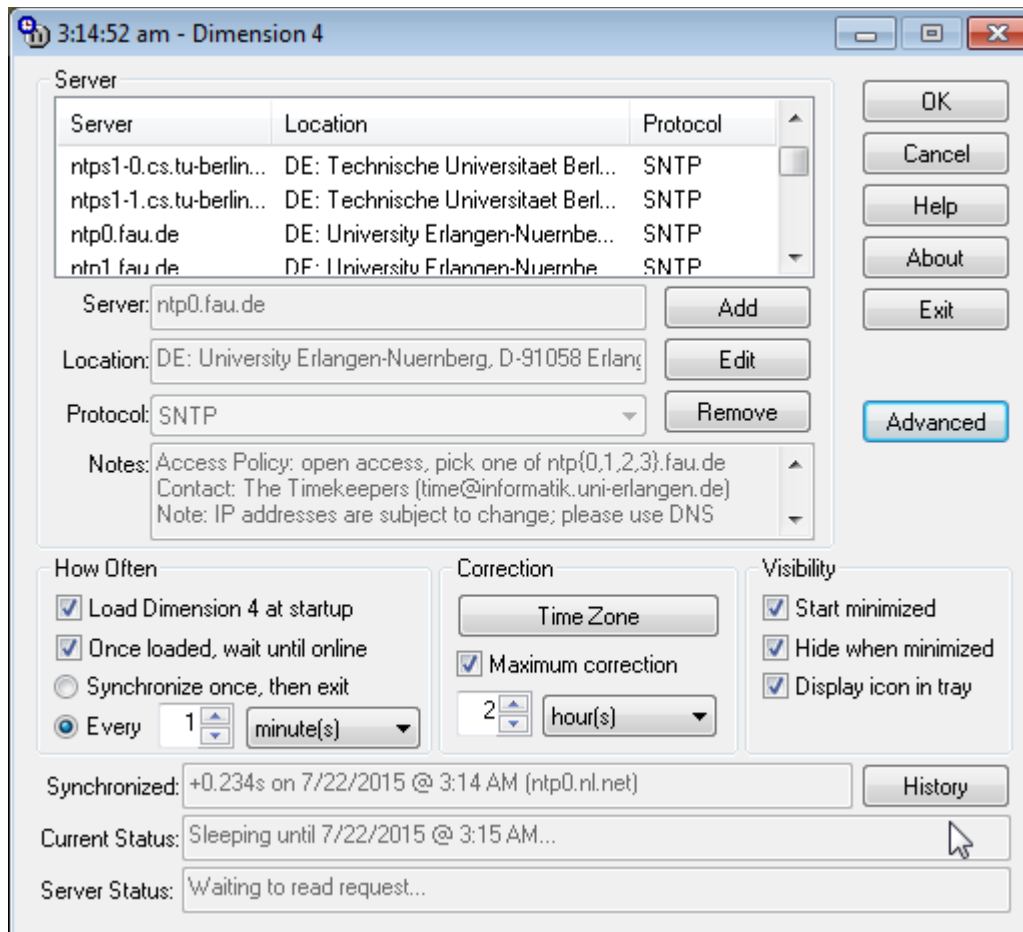
# Documentation:

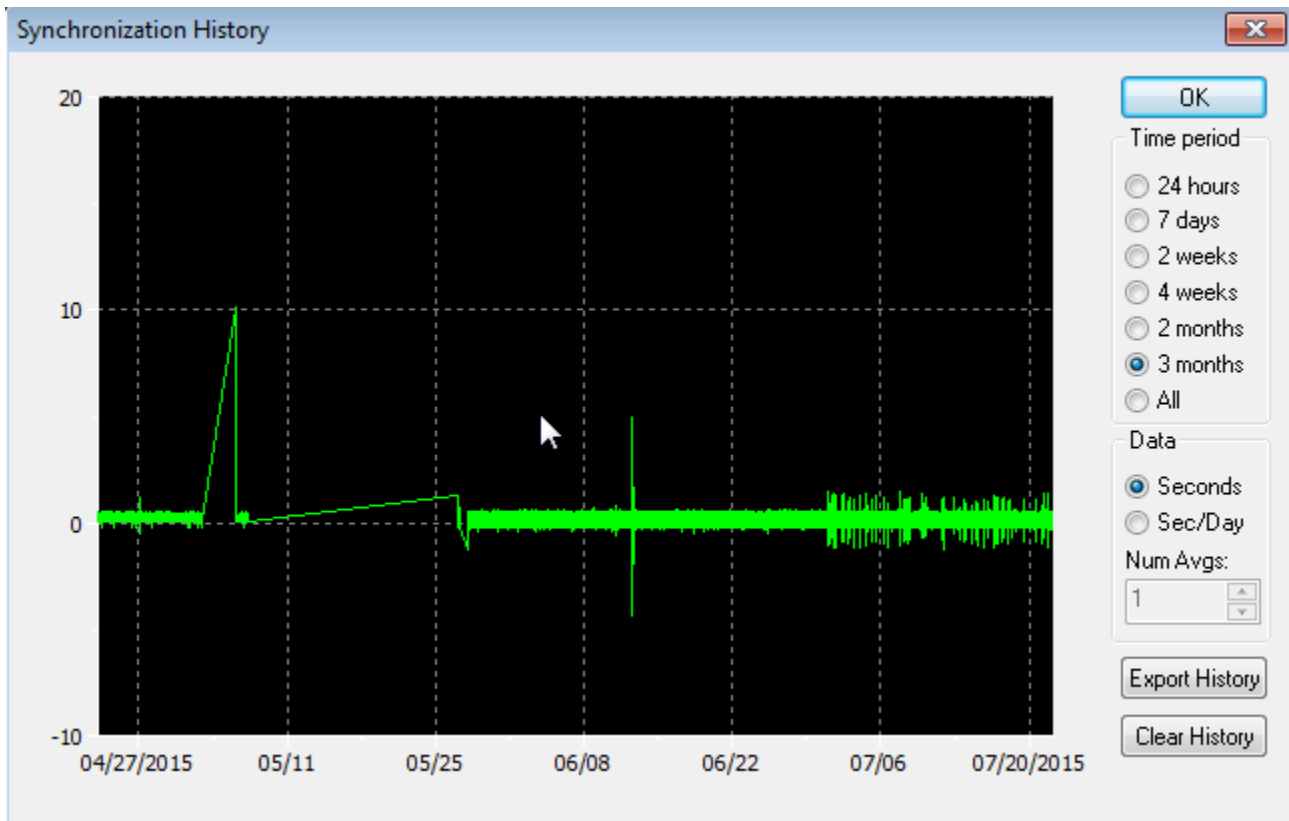
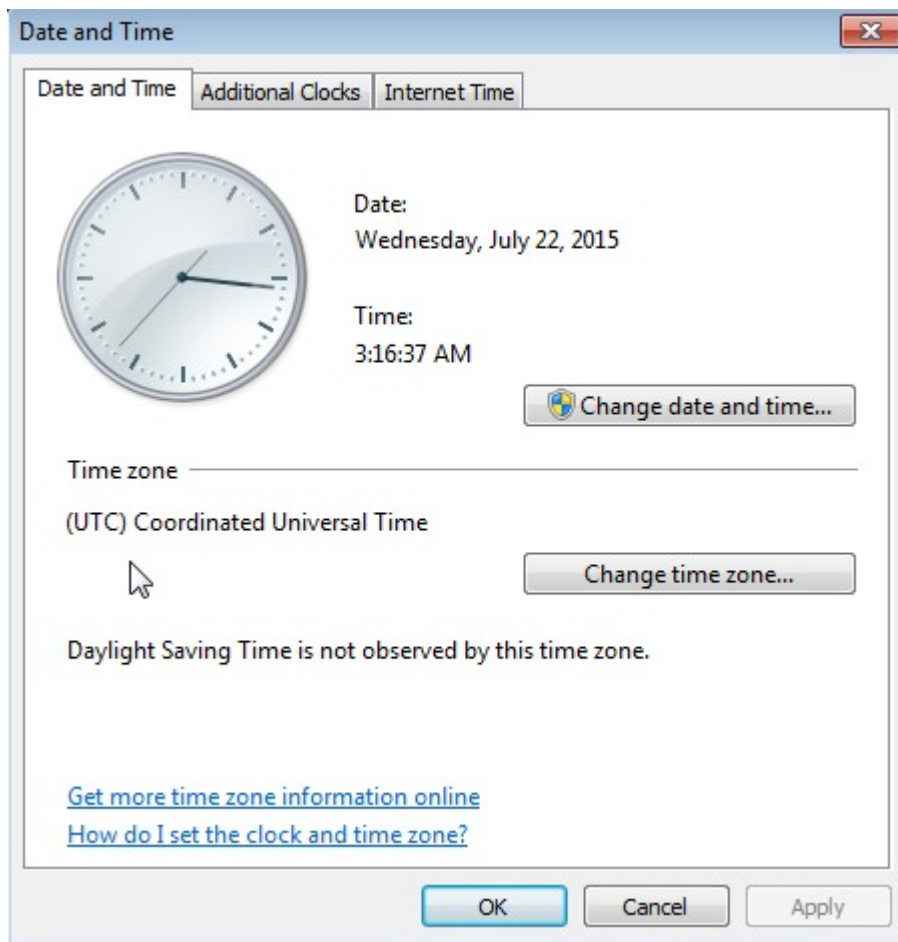
## Timesync tool – Dimension 4

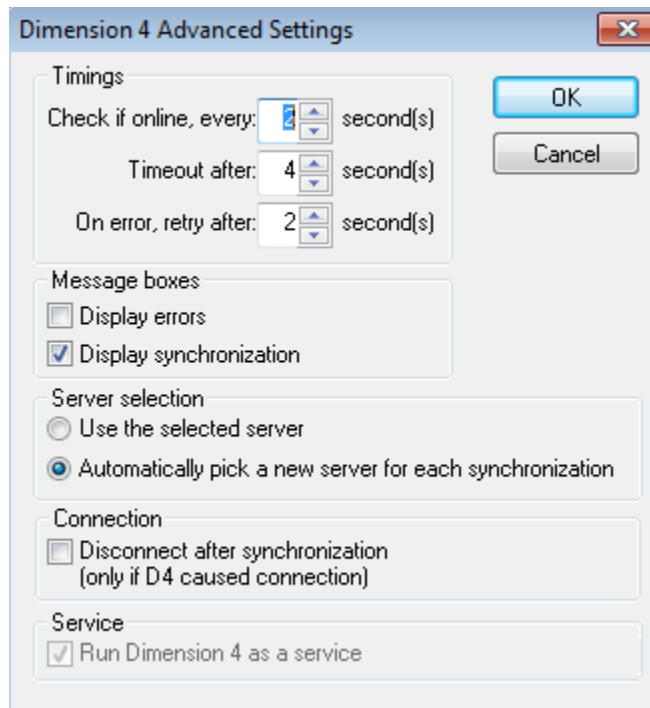
<http://www.thinkman.com/dimension4/>

July 2015

The following framegrabs show the settings in use at BOAO and SOAO meteor camera system. Do not forget to disable windows's automatic timesync function and to set the PC time to UTC.







In case of questions, do not hesitate to contact the project PI.